

COMPANY PROFILE

Beyond steel, to the future





We will continue the challenge of creating innovation and new value for steel that would be beyond your imagination.

At Toyo Kohan, we strive to fulfill our purpose to create new value by pursuing technological possibilities that have not yet been tapped and to contribute to the advancement of society together with our customers. Since our founding in 1934, Toyo Kohan has been dedicated to steel and has led the industry as a pioneer in steel sheet surface processing, building a vast array of know-how and techniques over the years into a driving force to go beyond steel in a leap to create new industries.

The Toyo Kohan Group brand

The Toyo Kohan Group decided to use TK WORKS as the brand name for the entire Group and Beyond Steel as its brand statement (slogan). The Group's brand name and slogan encapsulate our vision and express our ongoing dedication to refining our proprietary technology and expertise in steel that we have cultivated since our founding in 1934 to move beyond conventional expectations and make great leaps into new business areas and markets.

Robust, metallic gray lettering logotype represent the reliable steel technology we have developed. The orange TK arrow in the upper right is our emblem pointing to a future creating new value. The slight overall forward leaning angle indicates our stance as we ceaselessly move into the future. The arc of the base of the TK arrow evokes the horizon, expressing our will to make the world a brighter and better place through the imagination and technology of TK WORKS.



Company overview

Founding:	April 11, 1934
Capital:	5,040million yen
Number of employees:	1,496 (as of March 31, 2022)
Business	Manufacturing and sales of tinplate, sheet metal, and different types of surface-treated steel sheets as well as a variety of functional materials
Products:	<ul style="list-style-type: none">• Tinplate• Hi-Top (Tin free steel)• Hi-Pet (Laminated steel sheet)• Silver Top (Electro-galvanized steel sheet)• Ni-Top (Nickel-plated steel sheet)• VINYTOP (Vinyl chloride resin decorative steel sheet)• TOP (Cold rolled steel sheet)• MD (Magnetic disk aluminum substrates)• Fine Cast Film (Functional film for containers and optics)• FINE CLAD (Cladding materials)

Offices

Head Office	Osaki Forest Bldg., 2-18-1, Higashi-Gotanda, Shinagawa-ku, Tokyo 141-8260 Telephone: +81-3-4531-6850
Osaka Branch	Sumitomo Bldg., No.3, 4-7-19 Kitahama, Chuo-ku, Osaka 541-0041 Telephone: +81-6-6223-0581
Nagoya Business Office	NBF Nagoya Hirokoji Bldg., 2-3-6 Sakae, Naka-ku, Nagoya 460-0008 Telephone: +81-52-203-1771
Hiroshima Business Office	Hiroshima Inarimachi NK Bldg., 4-1 Inarimachi, Minami-ku, Hiroshima 732-0827 Telephone: +81-82-261-6301
R&D Center	1296-1 Higashitoyoi, Kudamatsu, Yamaguchi 744-8611 Telephone: +81-833-44-2540
Kudamatsu Plant	1302-1 Higashitoyoi, Kudamatsu, Yamaguchi 744-8611 Telephone: +81-833-41-3131

Group Companies

Domestic Companies

Fuji Technica & Miyazu Inc.	Manufacturing and selling of stamping dies for car bodies 20 Matoba, Shimizu-cho, Sunto-gun, Shizuoka 411-0915 Telephone: +81-55-977-2300
Kohan Shoji Co., Ltd.	Sales of steel sheet and related products Osaki Forest Bldg., 2-18-1, Higashi-Gotanda, Shinagawa-ku, Tokyo 141-0022 Telephone: +81-3-4531-6880
Kohan Kogyo Co., Ltd.	Manufacturing and sales of steel straps, machinery and appliances such as strapping machines, hard alloys, and manufacturing of magnetic disk aluminum substrates 1394 Nishitoyoi, Kudamatsu, Yamaguchi 744-0011 Telephone: +81-833-41-2747
TOYO PAX Co., Ltd.	Manufacturing and sales of packing materials, and packing works 905-2 Higashitoyoi, Kudamatsu, Yamaguchi 744-0002 Telephone: +81-833-45-2275

Kyodo Kaiun Co., Ltd.	Domestic marine transport, freight forwarding, custom clearance, and representative agent 1302 Higashitoyoi, Kudamatsu, Yamaguchi 744-0002 Telephone: +81-833-41-2612
TOYO PARTNER Co., Ltd.	Subcontract of welfare facilities 1302-1 Higashitoyoi, Kudamatsu, Yamaguchi 744-0002 Telephone: +81-833-44-2519
Kudamatsu Unyu Co., Ltd.	Land transport, harbor transport, shipping, and warehousing 1302-107 Higashitoyoi, Kudamatsu, Yamaguchi 744-0002 Telephone: +81-833-41-0627

Overseas

TOYO-MEMORY TECHNOLOGY SDN. BHD. (TMT)	Manufacturing and sales of magnetic disk aluminum substrates Plot3, Kulim Hi-Tech Industrial Zone (Phase II), 09000 Kulim, Kedah Darul Aman, Malaysia Telephone: +60-4-4031642
TOYO KOHAN SHANGHAI CO., LTD.	Sales of steel sheet related products, hard alloys, strapping machines and provision of related services Room 2701, Sheng Gao International Building, No.137, Xian Xia Road, Shanghai, China 200051 Telephone: +86-21-6259-1708
TOYO KOHAN Jiangsu Co., Ltd.	Manufacturing laminated steel sheet for cans No.1938, Taowu highway, Economy developing area, Taoyuan, Wujiang, Suzhou, Jiangsu, China 215236 Telephone: +86-512-6376-8718
TOSYALI TOYO CELIK ANONIM SIRKETI (Tosyali Toyo Steel CO. INC.)	Production and sales of cold rolled steel sheet and surface treated steel sheet <Head Office> Barbaros Mah. Sutcuolu Cad. Tosyali Plaza No:72 Atasehir 34746 Istanbul / Turkey Telephone: +90-216-470-5191 <Factory> Organize Sanayi Bolgesi, Buyuk Tuysuz Mahallesi, Kudamatsu Caddesi No:4 Zip Code:80950 Toprakkale - Osmaniye / Turkey Telephone: +90-328-827-1500



Creating products at Toyo Kohan starts with a close look at how people live their lives

People often ask us, "What does Toyo Kohan make?" And when they do, we just have to look at the things around us.

Toyo Kohan's products are used everywhere you look, in the things you use and enjoy every day.



Can Materials

For example, the "Hi-Pet" is an environmentally and human-friendly material.

Laminated steel sheet (Hi-Pet)

The "Hi-pet," film laminated steel sheet is proprietary developed by Toyo Kohan as an environmentally and human-friendly material. Its improvement dramatically enhances the applicability of beverage cans.

* "TULC" is an abbreviation for Toyo ULtimate Can developed by Toyo Seikan Co., Ltd.



▲TULC



▲aTULC

Tinplate

The history of tinplates, a lustrous material with excellent corrosion resistance, and their ability to be soldered and welded coincides with the history of Toyo Kohan. Tinplates are used in a wide variety of applications, such as food, beverages, 18-liter containers, and art cans. Our high-quality tinplates, produced using traditional technologies and state-of-the-art facilities, are establishing credibility worldwide.



▲Tinplate cans



▲Art cans

Tin free steel (Hi-Top)

The "Hi-Top" is the world's first tin free steel commercialized as a replacement for tinplates by Toyo Kohan. With good corrosion resistance and ability to be painted, it is used as a material for bottle crown caps, cans, and many other applications including printing plates and paint primer steel sheets.



▲18-liter cans



▲Bottle crown caps, tuna cans, and oil cans



Materials for Electric and Electronics Components

For example, the "Ni-Top" provides high quality and longevity.

Nickel-plated steel sheet (Ni-Top)

The "Ni-Top" was developed to meet the needs of surface-treated steel sheet applications where advanced characteristics are required in tandem with increased versatility. Nickel is not susceptible to oxidation at high temperatures and has excellent anti-corrosion resistance against alkali and chemicals. Toyo Kohan's "Ni-Top" is fruit of the combination, for the purpose of making the most of the properties of nickel, of the proprietary surface treatment and rolling technologies the company has cultivated over the years. This material is used in a wide variety of products from batteries and stationery to automotive parts.



▲Alkaline batteries



▲Lithium batteries



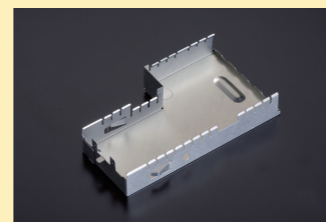
▲Stepping motors



▲Stationery

Electro-galvanized steel sheet (Silver Top)

The "Silver Top" is an environmentally friendly and highly functional material Toyo Kohan has developed proprietary. Applications include disc trays in DVD players, and copier parts. Furthermore, because of its beautiful golden appearance, this material is also used for aesthetic items such as cases and covers.



▲Electromagnetic shielding parts



▲Tray part for CD/DVD drives



Materials for Building and Household Electrical Appliances

For example, the "VINYTOP" allows various types of design processing.

Vinyl chloride resin decorative steel sheet (VINYTOP)

Besides sophisticated features, elaborate design is an important factor for consumers when choosing products. Toyo Kohan's "VINYTOP" resin decorative steel sheet meets the needs of the time. In addition to various printing designs, this material can also offer decorative surface finishes, including embossing and high luster mirror finishing. In a variety of applications from home electrical appliance components such as refrigerator doors to home interior/exterior components such as prefabricated baths, this material is sufficiently versatile to satisfy a wide variety of consumer's design requirements.



▲Prefabricated baths
A people- and earth-friendly decorative material based on our company's original polyester film-E Sheet.



◀Refrigerator surfaces
Realizes a high luster and depth appearance through a highly transparent PET film and a printed bottom layer.



▲Curtain rails
Highly regarded decorative panels for producing beautiful, comfortable living spaces.



▶Exterior door
Renders a true wood or stone texture through embossed and printed layers, using materials that do not discolor easily.



▲Kitchen Panel
These non-combustible decorative panels are developed using FineTop decorative steel sheets. The panels can be fabricated on-site, and the glossy design and convenient magnetic surface can help create a comfortable living space for the entire family.

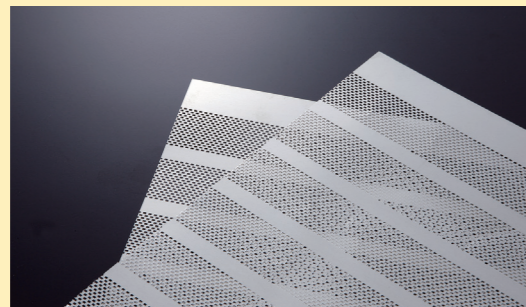


Materials for Automotive and Machine Parts

For example, we produce essential components that power hybrid cars.

Battery parts for hybrid cars (Ni-Top)

Toyo Kohan's perforated core material, used for important battery components in hybrid cars, is made of the "Ni-Top." The "Ni-Top" is a nickel-plated steel sheet that takes advantage of nickel's high temperature oxidation resistance to achieve excellent corrosion resistance. Toyo Kohan's leading technology supports hybrid cars, which will continue to increase in popularity.



▲Battery parts for hybrid car (Perforated core material)

Automotive parts (Ni-Top)

Because of its superb anti-corrosion property, Toyo Kohan's "Ni-Top" is used for automotive parts such as fuel pipes and mufflers. Being resistant to deteriorated gasoline, heat and exhaust gases, Ni-Top extends the life of products.



▲Fuel pipe



▲Muffler

Bearing parts (Silver Top and TOP)

The "TOP," boasting superb thickness accuracy, is used as a retainer material to ensure smooth rotation of ball bearings. For shielding applications where thinness and corrosion resistance are both required, the "Silver Top" is the ideal choice because it has achieved incomparable thinness that other galvanized steel sheets cannot offer. Toyo Kohan contributes to the quality of the bearings both on the inside and the outside.



▲Bearing parts



▲Retainers



Functional Materials

For example, Toyo Kohan's magnetic disk substrates enjoy a good reputation worldwide.

Magnetic disk substrates (MD) for HDD (Hard Disk Drive)

The "MD" plays an important role as data storage media for digital devices in today's IT society. Substrates come in two types: aluminum and glass, both coated with a thin film magnetic layer. The aluminum substrates produced by Toyo Kohan are mainly used for HDD built into servers, desktop computers, and digital devices.



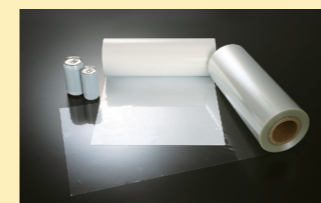
▲Aluminum substrates



▲Medium and head

Functional film for container (Fine Cast Film)

The "Fine Cast Film" is a non-stretching polyester film developed for stretch-draw-ironing cans (TULC). Polyester resin was chosen for its low flavor adsorption characteristics that maintain the original taste of the contents. In addition, to take advantage of the high workability level of TULC, a non-stretch film that shows high stretching capabilities at temperatures above the glass-transition point is employed, enabling the manufacture of clear and white films for the inner (clear) and outer (white) walls of the can. It is used not only as laminating film of Toyo Kohan's steel sheet for food and beverage cans but also is provided overseas as laminating material for cans in a linkup with Toyo Seikan Group.



▲Functional films for containers

Functional film for optics (Fine Cast Film)

Films for optical use are being developed based on functional film for container technology. We are working to develop optical films for flat panel display units.

Cladding materials (FINE CLAD)

FINE CLAD is a highly functional type of metallic cladding material, and Toyo Kohan was the first company in the world to develop it and put it to practical use. Toyo Kohan has made it possible to manufacture a variety of metal combinations by using their surface activation sealant process, which is a new ambient temperature sealing technology. Cleaning and leveling a surface to be sealed can create some excellent characteristics, and these characteristics are used in a number of various fields such as batteries and printed circuit boards.



▲Coils of cladding materials



▲Example of forming

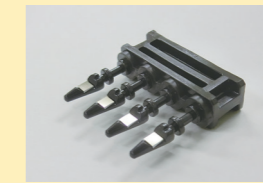


Surface Treatment Technologies & Other Products

For example, "GENE SILICON" will contribute to the realization of Precision Medicine.

DNA chip (GENE SILICON)

"GENE SILICON" utilizing surface treatment technology of Toyo Kohan is the DNA chip that make it possible to measure multiple genes at the same time and obtain high-integrity analysis results. We are aggressively promoting development mainly in the medical field. We are also trying to apply it to testing and research in other fields such as health care and food. We will continue to contribute to providing more effective treatments and the extension of healthy life. We will do this by swiftly setting up the latest results of genome research as test kits to medical institutions.



▲DNA chip (GENE SILICON)



▲GENE SILICON dedicated automatic device

Abrasion and corrosion-resistant hard alloy (KH)

"KH" is a cermet material originally developed by Toyo Kohan. It features excellent abrasion and corrosion resistance and high temperature properties. In particular, these excellent properties enjoy an excellent reputation in the plastics industry where this material is used in injection molding machine components. "KH" is produced and sold by Kohan Kogyo Co., Ltd., one of our group companies.



▲Injection molding machine components and kneading extrusion molding machine components

Tubular daylight guidance system (Dokodemo Hikari Mado)

The Dokodemo Hikari Mado is a skylight system that draws in natural light using a duct with an inner surface incorporating a highly reflective specular material (95% reflectivity). Using our accumulated knowhow in reflective material and our lighting simulation technology, we offer tailored solutions on how to bring natural light to hard-to-light areas. Our daylighting ducts and other lighting products built with reflective material are being adopted for lighting the insides of office buildings, schools, factories, houses and other places, and is contributing to the improved illumination of indoor spaces.

"Dokodemo Hikari Mado" is sold by Kohan Shoji Co., Ltd., one of our group companies.



▲Dokodemo Hikari Mado in use (Osaki Forest Bldg.)