

Company Profile



Please scan this QR code
to visit our website

Company Profile

Established	April 11, 1934
Capital	5,040 million yen
Number of employees	1,515 (as of March 31, 2025)
Main business	Manufacture and sale of tinplate, thin sheets, various surface-treated steel sheets, and various functional materials

Offices in Japan

- **Head Office**
Osaki Forest Building, 2-18-1 Higashi-Gotanda, Shinagawa-ku, Tokyo 141-8260
+81-3-4531-6850
- **Osaka Branch**
Sumitomo Building No. 3, 4-7-19 Kitahama, Chuo-ku, Osaka 541-0041
+81-6-6223-0581
- **Nagoya Sales Office**
NBF Nagoya Hirokoji Building, 2-3-6 Sakae, Naka-ku, Nagoya 460-0008
+81-52-203-1771
- **Hiroshima Sales Office**
Hiroshima Inarimachi NK Building, 4-1 Inarimachi,
Minami-ku, Hiroshima 732-0827
+81-82-261-6301
- **R&D Center**
1296-1 Higashitoyoi, Kudamatsu, Yamaguchi 744-8611
+81-833-44-2540
- **Kudamatsu Plant**
1302-1 Higashitoyoi, Kudamatsu, Yamaguchi 744-8611
+81-833-41-3131
- **Kashiwa Center**
6-1 Shin-Toyofuta, Kashiwa, Chiba 277-0804
+81-4-7137-0551

Group Companies

Japan

- **FUJI TECHNICA & MIYAZU INC.**
Manufacture and sale of press dies and other dies for automobiles
20 Matoba, Shimizu-cho, Sunto-gun, Shizuoka 411-0915
+81-55-977-2300
- **KOHAN SHOJI CO., LTD.**
Sales of steel plates and processed products
Osaki Forest Building, 2-18-1 Higashi-Gotanda, Shinagawa-ku, Tokyo 141-0022
+81-3-4531-6880
- **KOHAN KOGYO CO., LTD.**
Manufacture and sale of steel strips, bundling machines and other machinery
and equipment, hard alloys, etc., and manufacture of magnetic disk aluminum
substrates
1394 Nishitoyoi, Kudamatsu, Yamaguchi 744-0011
+81-833-41-2747
- **TOYO PAX CO., LTD.**
Manufacturing and sales of packaging materials, contract packaging work
905-2 Higashitoyoi, Kudamatsu, Yamaguchi 744-0002
+81-833-45-2275
- **KYODO KAIUN CO., LTD.**
Domestic shipping, freight forwarding, customs clearance, agency business
1302 Higashitoyoi, Kudamatsu, Yamaguchi 744-0002
+81-833-41-2612
- **TOYO PARTNER CO., LTD.**
Contracting for welfare services for health insurance associations, etc.
1302-1 Higashitoyoi, Kudamatsu, Yamaguchi 744-0002
+81-833-44-2519
- **KUDAMATSU UNYU CO., LTD.**
Land transport, harbor transport, shipping, and warehousing
1302-107 Higashitoyoi, Kudamatsu, Yamaguchi 744-0002
+81-833-41-0627

Overseas

- **TOYO-MEMORY TECHNOLOGY SDN. BHD.**
Manufacture and sale of magnetic disk aluminum substrates
Plot 3, Kulim Hi-Tech Industrial Zone (Phase II),
09090 Kulim, Kedah Darul Aman, Malaysia
+60-4-4031642
- **TOYO KOHAN SHANGHAI CO., LTD.**
Sales of steel plate-related products, hard materials,
automatic bundling machines, etc., and provision of related services
Room 2701, Sheng Gao International Building,
No. 137, Xian Xia Road, Shanghai, China 200051
+86-21-6259-1708
- **TOYO KOHAN JIANGSU CO., LTD.**
Manufacturing laminated steel sheet for cans
No. 1938, Taowu highway, Economy developing area,
Taoyuan, Wujiang, Suzhou, Jiangsu, China 215236
+86-512-6376-8718
- **TOSYALI TOYO CELIK ANONIM SIRKETI
(Tosyali Toyo Steel CO. INC.)**
Manufacture and sale of cold-rolled steel sheets and
surface-treated steel sheets

Head Office:
Barbaros Mah. Sutcuoyulu Cad.
Tosyali Plaza No. 72 Atasehir 34746 Istanbul, Turkey
+90-216-470-5191

Plant:
Organize Sanayi Bolgesi, Buyuk Tuysuz Mahallesi,
Kudamatsu Caddesi No. 4
80950 Toprakkale – Osmaniye, Turkey
+90-328-827-1500

TK WORKS

Beyond Steel New Value for the Future



Beyond Steel, for more freedom, more prosperity

Toyo Kohan began its journey with steel and has since built a history of enduring commitment and refined craftsmanship while expanding into diverse materials.

Leveraging the reliable expertise and knowledge honed over our long history, we unlock the infinite potential of materials to develop products that support our daily lives.

Our journey continues on toward our 100th anniversary and beyond.

Embracing the challenges ahead, we will aim to be an unrivaled player in the global material industry and create value to meet expectations of society.

Corporate Philosophy

Purpose

Toyo Kohan pursues new possibilities in technology to create new value and to build a better society together with our customers.

Vision

Through the integration and development of core technologies for materials, rolling, and surface treatment, we strive to be unrivaled in the global material industry.

Our Values

- 1 Conduct business in accordance with the highest ethical standards
- 2 Have respect for one another and embrace diversity
- 3 Link personal growth to the growth of the company
- 4 Pursue new challenges with passion and courage
- 5 Focus on issues that really matter to create new social values



History

Toyo Kohan was founded in 1934 as Japan's first private tinplate manufacturer. Drawing on unique, steel-based technologies—such as rolling and surface treatment—honed over our long history, we have successfully diversified into non-steel product areas, including aluminum and polymer products. Furthermore, by actively pursuing global expansion, we continue to broaden our business domain.

Polisher for magnetic disk aluminum substrates



Toward the 100th Anniversary

2024-90th Anniversary

We will continue to expand our business field and deliver new value to the future.



Toyo Kohan Group Brand

In 2013, the Toyo Kohan Group formulated its brand name, TK WORKS, and its slogan, Beyond Steel. They represent our determination on our vision that aims to take a great leap forward for the future and the new world beyond the conventional boundaries by taking advantage of the long-cultivated unique technologies and knowledge rooted in steel since our founding in 1934.

Growth Stage 4

1997- Global expansion and new field ventures

In 1997, we established our first overseas subsidiary in Malaysia to begin the manufacturing and sales of MD (magnetic disk substrates). We then deployed a sales company for steel sheet products in China, and a joint venture to manufacture and sell surface-treated steel sheets in Turkey. Parallel to this growth, we aggressively pursued product development. We created "Fine Cast Film," a functional film for containers, by bringing the production of laminated steel sheet film in-house. In addition, our challenges in the medical field bore fruit as the development of a DNA chip used for genetic analysis with our advanced surface treatment technology.



TOYO-MEMORY TECHNOLOGY SDN. BHD. (Malaysia)

Growth Stage 3

1985- Innovation beyond steel

In 1985, we successfully introduced advanced products such as Hi-Pet, an environmentally friendly laminated steel sheet, and MD, an aluminum substrate for magnetic disks, developed by applying our proprietary polishing and plating technologies to non-ferrous materials. Furthermore, in 1986, anticipating the expanding demand in the battery sector, we launched Nickel Top, a nickel-plated steel sheet leveraging our rolling, heat treatment, and surface treatment expertise. The successful development of these products enabled us to establish a unique and leading position as a materials manufacturer.



Growth Stage 2

1958- Product development leveraging unique technology

Seamless product development in this period strengthened our lineup: 1) vinyl chloride resin-coated steel sheet (VINYTOP) created from the idea of coloring steel, 2) tin-free steel (Hi-Top) for can materials as a substitute for tinplate, and 3) electro-galvanized steel sheet (Silver Top) with improved corrosion resistance using zinc, which is highly effective in preventing steel from rusting.

Hi-Top line



Cold rolling mill



Growth Stage 1

1934- Pioneering domestic tinplate: launch and growth

We were established in 1934 to achieve domestic self-sufficiency in tinplate and began production in 1935 at Kudamatsu Plant in Yamaguchi Prefecture. We enhanced production facilities and established our manufacturing foundation.



Hot rolling process



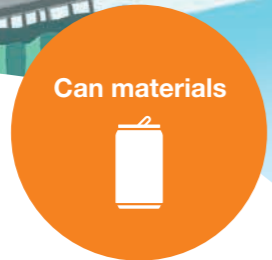
Electrolytic tinning line



Roofing ceremony at Kudamatsu Plant

We offer products that focus on creating a better life.

Toyo Kohan's products are used in your favorite everyday items and your familiar places.



Our steel sheets are widely applied in packaging from beverage cans to industrial cans.

Tinplate

Tinplate has beautiful luster and high corrosion resistance. It is an essential material for daily life, broadly used for metal containers, including food, beverage cans, 18-liter cans and general line cans. Our state-of-the-art equipment combined with traditional technologies creates a high quality tinplate that has been trusted globally. Our finest tinplate will meet a wide range of specifications and customer needs.



▲ Tinplate cans

Tin-free steel (Hi-Top)

Hi-Top is a tin-free steel sheet we successfully commercialized for the first time in the world as an advanced material alternative to tinplate. With high corrosion resistance and paintability, it is used for a broad range of applications, from cans and crown caps to printing plates and pre-coated steel plates.



▲ 18-liter can

Laminated steel sheet (Hi-Pet)

Hi-Pet is our original, eco-friendly film-laminated steel sheet. One of its major applications is TULC (Toyo Ultimate Can), a beverage can developed by Toyo Seikan Co., Ltd. Using this material for cans eliminates the coating and washing processes from the can making line, achieving a substantial reduction in CO₂ emissions and no discharge of wastewater. Hi-Pet is also used for food containers and 18-liter cans.



▲ TULC



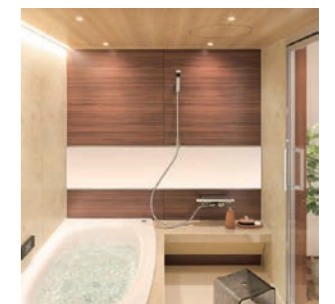
We can flexibly meet various design needs to create stylish living spaces.

High-design resin laminated steel sheet (VINYTOP)

Customers increasingly seek high quality appearance as well as sophisticated features in their product selection. VINYTOP satisfies today's customer demand, enabling not just a variety of graphics printed on its surface, but also beautiful surface treatments, such as embossing and mirror-like finishes. We can flexibly meet design needs for various products, from refrigerator doors and other home appliance components to bathroom panels.



▲ Refrigerator surfaces
The combination of highly transparent PET film and a printed layer provides gloss and depth to the surface.



▲ Modular bathroom
Wood grain and stone surface textures reproduced by embossing and printing achieve high-quality bathroom design.



Our materials are widely used in various field, especially cylindrical battery outer packaging.

Nickel-plated steel sheet (Ni-Top)

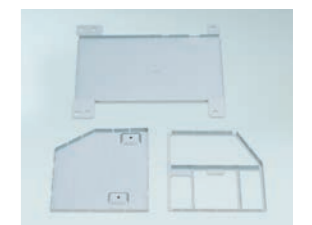
Ni-Top is created by combining the surface treatment and rolling technologies we have developed over many years. This material has been used in a wide range of products from stationery to batteries and automotive components, by fully capitalizing on nickel's features of anti-oxidation at high temperatures and corrosion resistance to alkalis and chemicals.



▲ Alkaline batteries

Electro-galvanized steel sheet (Silver Top)

Silver Top is our original, highly functional and environmentally friendly material. We offer a broad lineup of the electro-galvanized steel sheets, which feature attractive surface finishes and superior functional properties, including scratch resistance, workability, paintability, solder wettability, and conductivity.



▲ Electrical and electronic components



Our years of expertise enables us to create medical solutions to help people live healthier lives.

DNA chip genetic analysis kit

GeneSilicon®, a DNA chip utilizing our surface treatment technology, can simultaneously detect multiple genes in a single measurement and provide highly reliable analysis results. We have been exploring applications of the DNA chip mainly in the medical field. Our genetic analysis kits allow the latest evidences of genome studies to be swiftly translated into clinical practice, contributing to rapid diagnosis and more effective treatment.



▲ Genetic analysis kit



▲ DNA chips



Smartphone screen (Fine Cast Film)

Bottle cap (Hi-Top)

Electric vehicle battery (Ni-Top)

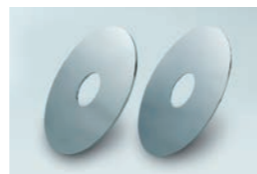
DNA chip genetic analysis system



Our highly functional materials are widely used in high-tech products, including smartphone screens and data center servers.

Aluminum substrates for magnetic disks

Magnetic disk aluminum substrates, created by combining the latest and traditional technologies, have been supporting the expansion of storage capacity. Hard disk drives were typically embedded in digital devices such as computers and video recorders. Today, they are largely used in data centers, which underpin the advancement of the data society, playing a key role as a storage medium for data generated every day.



▲ Magnetic disk aluminum substrates

Optical functional film (Fine Cast Film)

We have developed optical-use films for flat panel displays by applying our film-forming technology for laminated steel sheet to produce beverage cans. Our films have been greatly contributing to create larger and thinner displays.



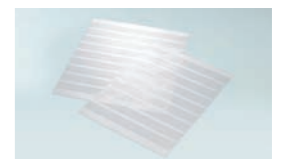
▲ Optical functional film (Fine Cast Film)



Our advanced technologies also support automotive and industrial machinery parts, working behind the scenes of daily life.

Hybrid vehicle battery parts (nickel-plated core material)

Our advanced technologies have been contributing to hybrid vehicles, whose popularity is increasingly growing. We developed a perforated sheet metal as a battery core material for hybrid vehicles by processing Ni-Top, our nickel-plated steel sheet. The battery material fully capitalizes on nickel's features of anti-oxidation at high temperatures and has superior corrosion resistance.



▲ Hybrid vehicle battery material

Automotive parts (Ni-Top)

With its high anti-corrosion properties, Ni-Top is also applied to automotive parts such as fuel pipes and mufflers. It is resistant to gasoline, heat, exhaust gas, etc., allowing for a longer parts life.



▲ Automotive muffler

Bearing components (TOP & Silver Top)

TOP, our cold rolled steel sheet with high thickness accuracy, is used for ball bearing retainers, ensuring the smooth rotation of bearings. Meanwhile, Silver Top, our electro-galvanized steel sheet with unparalleled thinness, is essential for bearing seals, which need to be both thin and resistant to corrosion. These products represent our contribution to the quality of the entire bearing systems.



▲ Bearing seals

We brave challenges.

In R&D, things may not always go as expected. However, no experience is wasted. We believe that persistent R&D efforts will create technologies that pave the way for the next generation and help build a 100-year company.

Research and development

Our R&D activities require more than individual capabilities. Our researchers with wide-ranging expertise, including materials, chemistry, physics, electronics, mechanics, life science, and digital technologies, create new value through team work while sharing wisdom beyond their research groups.

We will create products that society needs by honing our foundational technologies — contributing, together with our customers, to a prosperous society by leveraging each individual's strengths.

These dynamic R&D efforts are at the heart of what we pursue.

The evolution of materials drives society into a new phase of development.



■ Next-generation eco-friendly energy materials

Aiming to contribute to a zero-carbon society, we are developing materials that support next-generation energy technologies. Our R&D on eco-friendly materials advances toward a sustainable society from multiple perspectives — including next-generation battery materials that contribute to future carbon neutrality, the harnessing of untapped energy, and technologies to reduce CO₂ emissions.

■ Electronic materials for high-speed communications

Substrates for electronic materials with high-frequency response and electromagnetic-shielding functions contribute to smaller, higher-density electronic devices. Our technologies support the evolution of communication infrastructure as a foundational technology for an advanced digital society.

■ Challenges in the medical and health care fields

Beyond the boundaries of a steel manufacturer, we challenged the medical field. Using our long-cultivated foundational technologies, we realized compact, high-precision substrates for genetic diagnosis. We will keep contributing to medicine's future with our technologies.

Aiming to be a company friendly to people and the earth

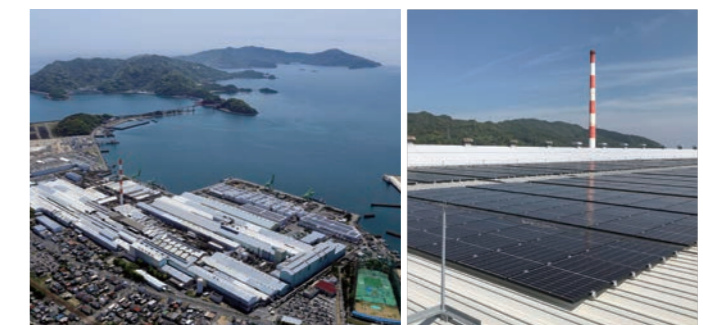
We focus on our environmental initiatives aimed at reducing environmental burden, and on health management that values the well-being of all employees. These two pillars drive our commitment to fulfilling our social responsibilities and achieving sustainable growth.

Environmental initiatives

Toyo Kohan is advancing zero-carbon initiatives around Yamaguchi Prefecture where it has production and research bases.

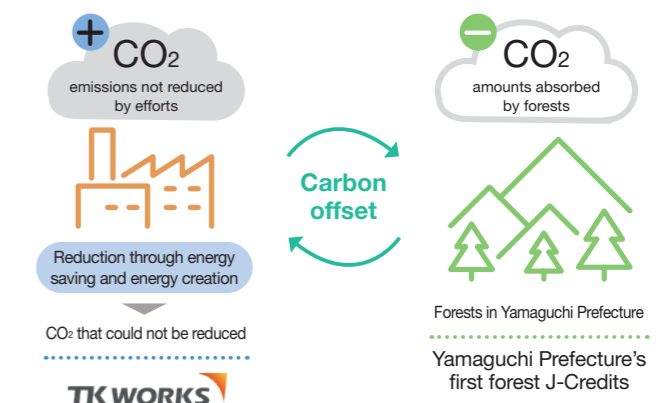
■ Introducing renewable energy (solar power station)

We are introducing solar power stations on the roof of buildings in the Kudamatsu Plant and farm-based solar power stations outside the plant. The farm-based stations are being installed for the first time in the Chugoku region, together with the Chugoku Electric Power CO., Inc. We hope that this project will help reclaim abandoned farmland and revitalize local agriculture.



■ Increasing CO₂ absorption through forest utilization

We are purchasing forest-derived J-Credits (a carbon credit certified by the Japanese government) that are issued through the proper management of forests in Yamaguchi Prefecture. We will help revitalize forestry and conserve forests, biodiversity, and water source in the prefecture by participating in the proper management of forests that provide water essential to people's life and corporate activities.



Health management

Toyo Kohan promotes health management to create an open and comfortable workplace where individuals can stay healthy physically and mentally and better understand each other.

We consider the enhancement of all employee's well-being as a management approach, strategically conducting health maintenance and improvement projects. We hope these efforts will lead to enhancing employees' performance, productivity, and engagement and, in turn, contribute to higher corporate value.

■ Improving well-being

We are implementing various initiatives, such as maintenance and improvement projects, health guidance by industrial physicians, health nurses, and nurses, and mental health care.